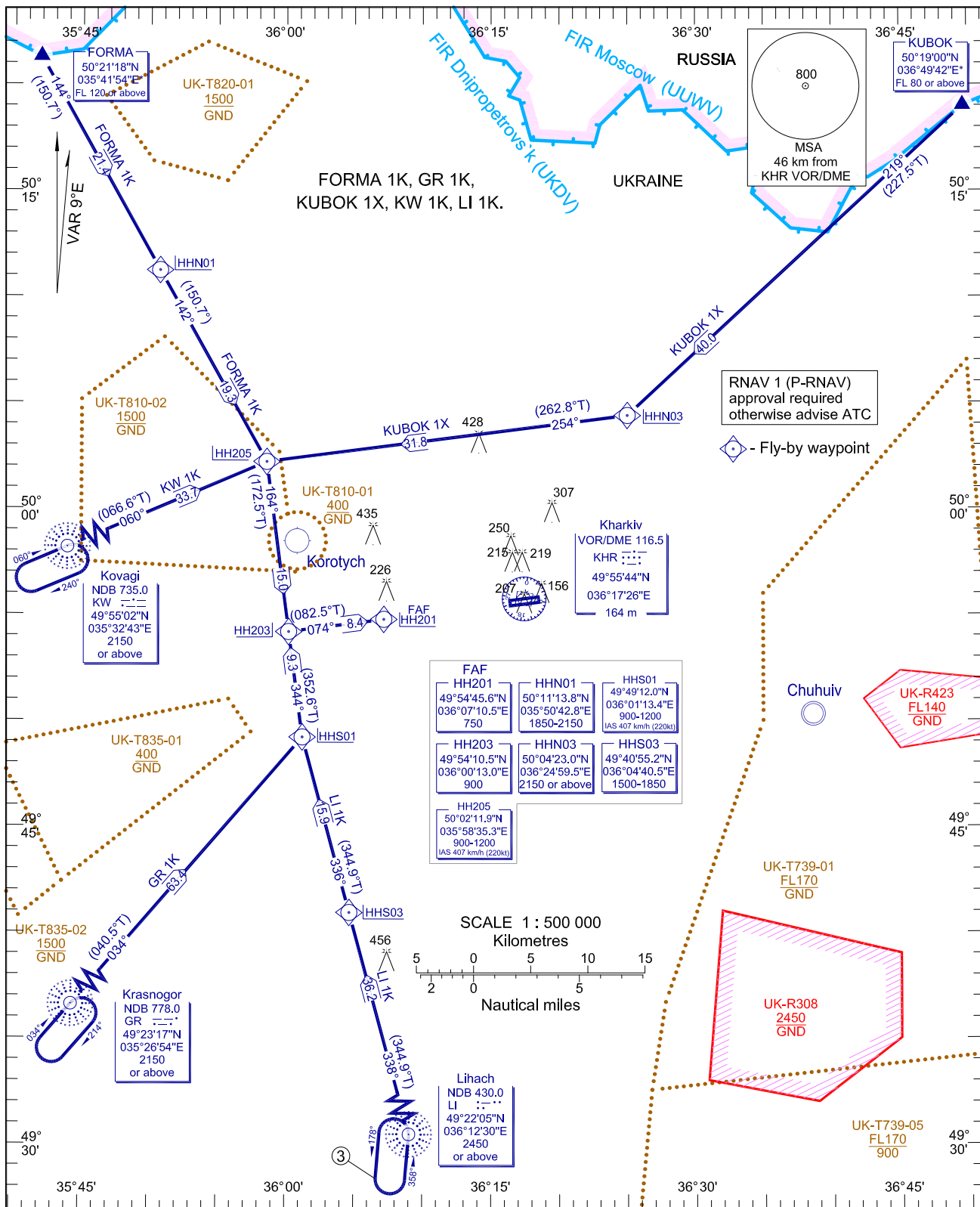


**RNAV ARRIVAL PROCEDURE  
TRANSITION TO FINAL APPROACH**

TRANSITION LEVEL by ATC  
TRANSITION ALT 3050

**KHARKIV/Osnova  
RNAV (GNSS) RWY 07**



CHANGE: ADAKO 1K; NOTE:

RNAV ARRIVAL PROCEDURE				RNAV 1 (GNSS) RWY 07			
Name	Path description	Fix identifier (Waypoint name)	Flyover	Course *M (*T)	Turn direction	Altitude	Speed limit
<b>FORMA 1K</b> <b>FORMA ONE</b> <b>KILO</b>	IF	FORMA	-	-	-	+ FL120	-
	TF	HHN01	N	144 (150,7)	-	1850-2150	-
	TF	HH205	N	142 (150,7)	-	900-1200	407km/h (220kt)
	TF	HH203	N	164 (172,5)	R	900	-
<b>KUBOK 1X</b> <b>KUBOK ONE</b> <b>X-RAY</b>	TF	HH201	N	074 (082,5)	L	750	-
	IF	KUBOK	-	-	-	+ FL80	-
	TF	HHN03	N	219 (227,5)	-	+ 2150	-
	TF	HH205	N	254 (262,8)	R	900-1200	407km/h (220kt)
<b>KW 1K</b> <b>Kovagi ONE</b> <b>KILO</b>	TF	HH203	N	164 (172,5)	R	900	-
	TF	HH201	N	074 (082,5)	L	750	-
	IF	KW	-	-	-	+ 2150	-
	TF	HH205	N	060 (066,6)	-	900-1200	407km/h (220kt)
<b>GR 1K</b> <b>Krasnogor</b> <b>ONE KILO</b>	TF	HH203	N	344 (352,6)	L	900	-
	TF	HH201	N	074 (082,5)	R	750	-
	IF	GR	-	-	-	+ 2150	-
	TF	HHS01	N	034 (040,5)	-	900-1200	407km/h (220kt)
<b>LI 1K</b> <b>Lihach ONE</b> <b>KILO</b>	TF	HH203	N	344 (352,6)	R	900	-
	TF	HH201	N	074 (082,5)	R	750	-
	IF	LI	-	-	-	+ 2450	-
	TF	HHS03	N	338 (344,9)	-	1500-1850	-
	TF	HHS01	N	336 (344,9)	-	900-1200	407km/h (220kt)
TF	HH203	N	344 (352,6)	R	900	-	
TF	HH201	N	074 (082,5)	R	750	-	

## RNAV HOLDINGS

Fix identifier (Waypoint name)	Inbound Track *M (*T)	Turn direction	Minimum Altitude	Time MIN	Distance	Speed limit
KW	060 (066,6)	R	2150	1	-	463km/h (250kt)
GR	034 (040,5)	R	2150	1	-	463km/h (250kt)

## WAYPOINTS

Waypoint name	Coordinates		Waypoint name	Coordinates		Waypoint name	Coordinates	
FORMA	50°21'18,0"N	035°41'54,0"E	HHN01	50°11'13,8"N	035°50'42,8"E	KW	49°55'02,0"N	035°32'43,0"E
GR	49°23'17,0"N	035°26'54,0"E	HHN03	50°04'23,0"N	036°24'59,5"E	LI	49°22'05,0"N	036°12'30,0"E
HH201(FAF)	49°54'45,6"N	036°07'10,5"E	HHS01	49°49'12,0"N	036°01'13,4"E			
HH203	49°54'10,5"N	036°00'13,0"E	HHS03	49°40'55,2"N	036°04'40,5"E			
HH205	50°02'11,9"N	035°58'35,3"E	KUBOK	50°19'00,0"N	036°49'42,0"E			

INTENTIONALLY LEFT BLANK  
*СТРАНИЦА НАМЕРЕННО ОСТАВЛЕНА НЕЗАПОЛНЕННОЙ*