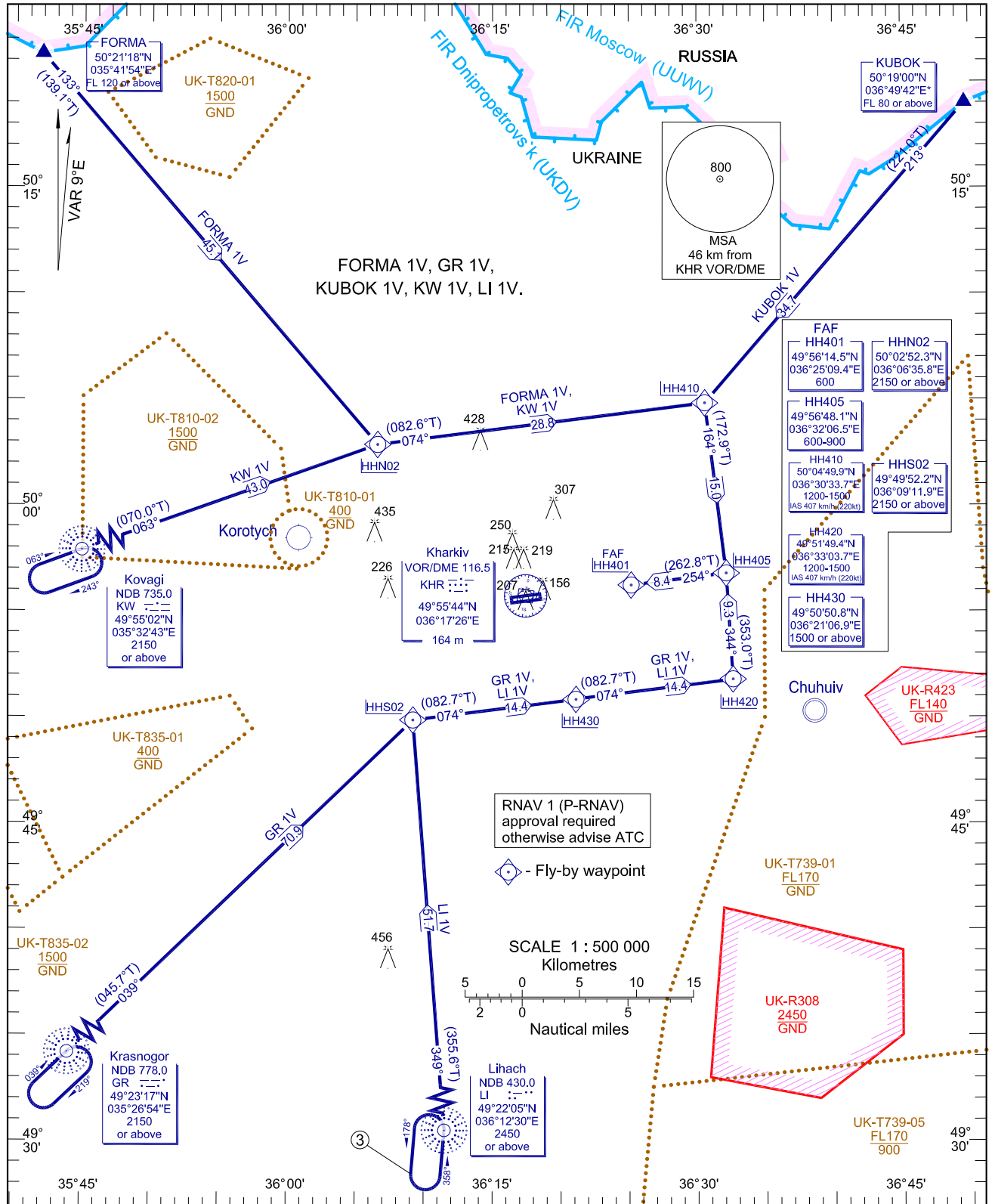


RNAV ARRIVAL PROCEDURE  
TRANSITION TO FINAL APPROACH

TRANSITION LEVEL by ATC  
TRANSITION ALT 3050

KHARKIV/Osnova  
RNAV (GNSS) RWY 25



- NOTE:
1. Expect vectors to final.
  2. For final approach see ILS instrument approach chart UKHH RWY 25.
  3. Available for missed approach only at 3050 AMSL.

BEARINGS AND TRACKS ARE MAGNETIC  
ALTITUDES, HEIGHTS AND ELEVATIONS ARE IN METRES  
DISTANCES ARE IN KILOMETRES

CHANGE: ADAKO 1V; NOTE.

RNAV ARRIVAL PROCEDURE				RNAV 1 (GNSS) RWY 25			
Name	Path description	Fix identifier (Waypoint name)	Flyover	Course *M (*T)	Turn direction	Altitude	Speed limit
FORMA 1V FORMA ONE VICTOR	IF	FORMA	-	-	-	+ FL120	-
	TF	HHN02	N	133 (139,1)	-	+ 2150	-
	TF	HH410	N	074 (082,6)	L	1200-1500	407km/h (220kt)
	TF	HH405	N	164 (172,9)	R	600-900	-
	TF	HH401	N	254 (262,8)	R	600	-
KUBOK 1V KUBOK ONE VICTOR	IF	KUBOK	-	-	-	+ FL80	-
	TF	HH410	N	213 (221,0)	-	1200-1500	407km/h (220kt)
	TF	HH405	N	164 (172,9)	L	600-900	-
	TF	HH401	N	254(262,8)	R	600	-
KW 1V Kovagi ONE VICTOR	IF	KW	-	-	-	+ 2150	-
	TF	HHN02	N	063 (070,0)	-	+ 2150	-
	TF	HH410	N	074 (082,6)	R	1200-1500	407km/h (220kt)
	TF	HH405	N	164 (172,9)	R	600-900	-
	TF	HH401	N	254 (262,8)	R	600	-
GR 1V Krasnogor ONE VICTOR	IF	GR	-	-	-	+ 2150	-
	TF	HHS02	N	039 (045,7)	-	+ 2150	-
	TF	HH430	N	074 (082,7)	R	+ 1500	-
	TF	HH420	N	074 (082,7)	-	1200-1500	407km/h (220kt)
	TF	HH405	N	344 (353,0)	L	600-900	-
	TF	HH401	N	254 (262,8)	L	600	-
LI 1V Lihach ONE VICTOR	IF	LI	-	-	-	+ 2450	-
	TF	HHS02	N	349 (356,6)	-	+ 2150	-
	TF	HH430	N	074 (082,7)	R	+ 1500	-
	TF	HH420	N	074 (082,7)	-	1200-1500	407km/h (220kt)
	TF	HH405	N	344 (353,0)	L	600-900	-
	TF	HH401	N	254 (262,8)	L	600	-

## RNAV HOLDINGS

Fix identifier (Waypoint name)	Inbound Track *M (*T)	Turn direction	Minimum Altitude	Time MIN	Distance	Speed limit
KW	063 (070,0)	R	2150	1	-	463km/h (250kt)
GR	039 (045,7)	R	2150	1	-	463km/h (250kt)

## WAYPOINTS

Waypoint name	Coordinates		Waypoint name	Coordinates		Waypoint name	Coordinates	
FORMA	50°21'18,0"N	035°41'54,0"E	HH420	49°51'49,4"N	036°33'03,7"E	KW	49°55'02,0"N	035°32'43,0"E
GR	49°23'17,0"N	035°26'54,0"E	HH430	49°50'50,8"N	036°21'06,9"E	LI	49°22'05,0"N	036°12'30,0"E
HH401(FAF)	49°56'14,5"N	036°25'09,4"E	HHN02	50°02'52,3"N	036°06'35,8"E			
HH405	49°56'48,1"N	036°32'06,5"E	HHS02	49°49'52,2"N	036°09'11,9"E			
HH410	50°04'49,9"N	036°30'33,7"E	KUBOK	50°19'00,0"N	036°49'42,0"E			

INTENTIONALLY LEFT BLANK  
*СТРАНИЦА НАМЕРЕННО ОСТАВЛЕНА НЕЗАПОЛНЕННОЙ*