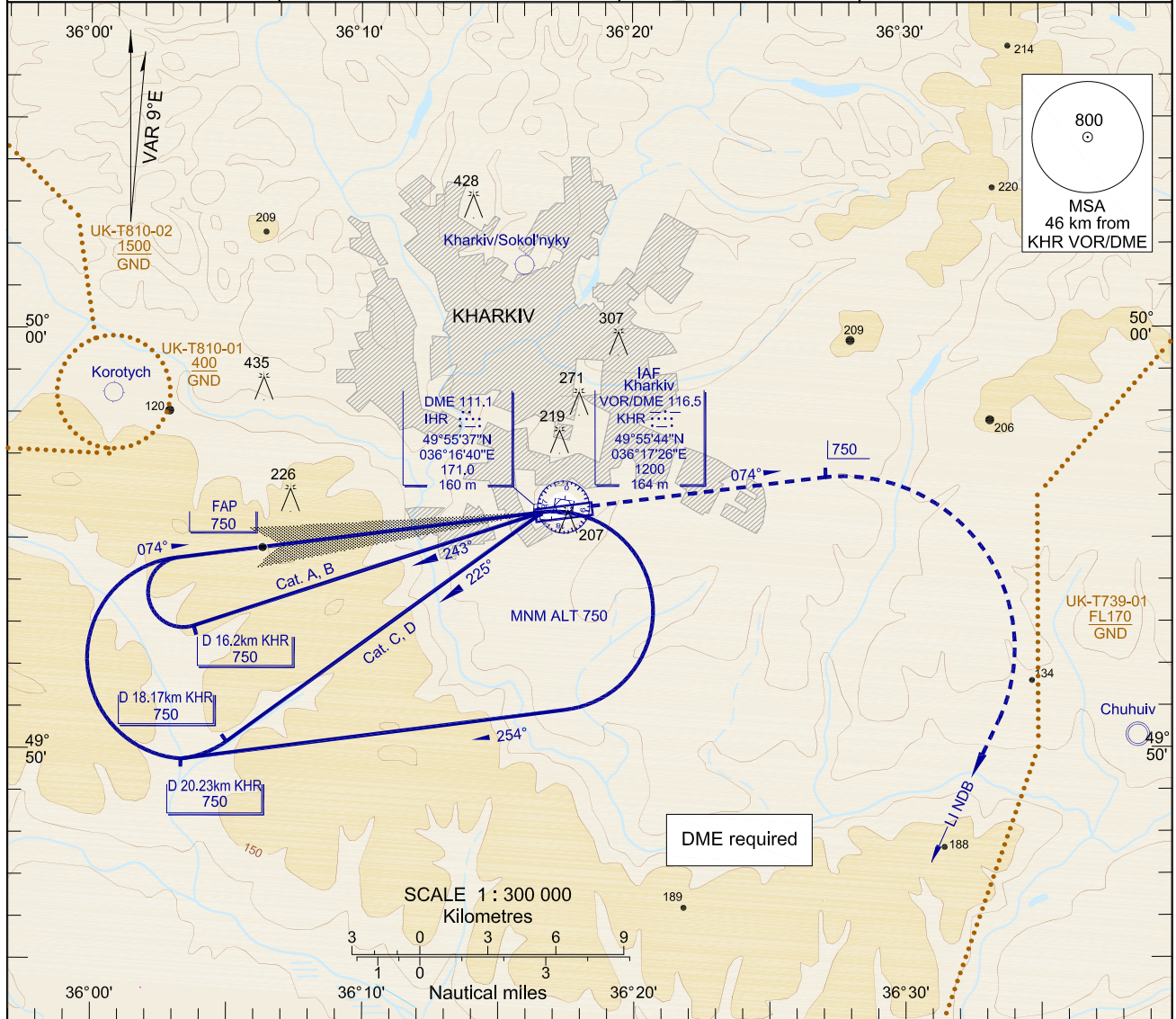


**INSTRUMENT  
APPROACH CHART (IAC)-ICAO**

AD ELEV 161 m

**KHARKIV/Osnova  
ILS DME RWY 07**

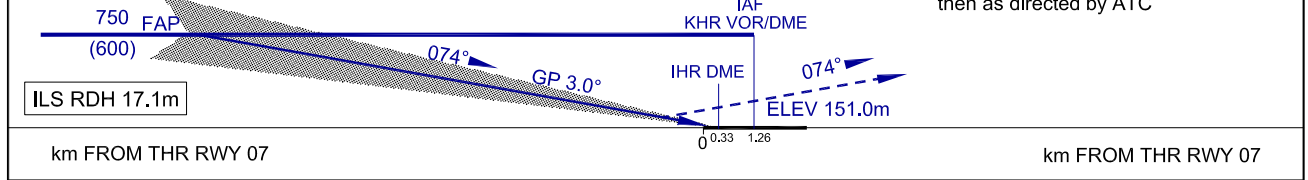
BEARINGS ARE MAGNETIC ELEV-ALT-HGT IN METRES	TRANSITION LEVEL by ATC TRANSITION ALT 3050	LOC 111.1 IHR	TWR 118.100
---	--	------------------	-------------



IHR DME, km	10.0	9.0	8.0	7.0	6.0	5.0	4.0	3.0	2.0	1.0
DIST THR, km	9.66	8.66	7.66	6.66	5.66	4.66	3.66	2.67	1.67	0.67
ALT (HGT), m	675(524)	622(471)	570(419)	518(367)	465(314)	413(262)	361(210)	308(157)	256(105)	204(53)

**MISSED APPROACH RADIO COMM FAILURE:**  
Climb on track 074° to 750(600), then turn RIGHT to LI NDB climbing to 3050, hold over 5 min, then proceed to IAF KHR VOR/DME then according to chart.

**MISSED APPROACH:**  
Climb on track 074° to 750(600), then turn RIGHT to LI NDB climbing to 3050, then as directed by ATC



OCA/H		A	B	C	D	NOTE: Visual manoeuvring (circling) and visual approach in NORTH direction from AD not authorized.				
Straight-in Approach	ILS Cat I	217(66)	220(69)	221(72)	226(75)					
	ILS Cat II	190(39)	195(44)	199(48)	203(52)					
Circling		310(160)	365(210)	430(280)	430(280)					
GROUND SPEED		km/h	150	180	210	240	270	300	330	360
FAP - THR 11144m		min:s	4.27	3.43	3.11	2.47	2.29	2.14	2.02	1.51
RATE OF DESCENT		m/s	2.2	2.6	3.1	3.5	3.9	4.4	4.8	5.2

CHANGE: Name Kharkiv/Sokol'nyky