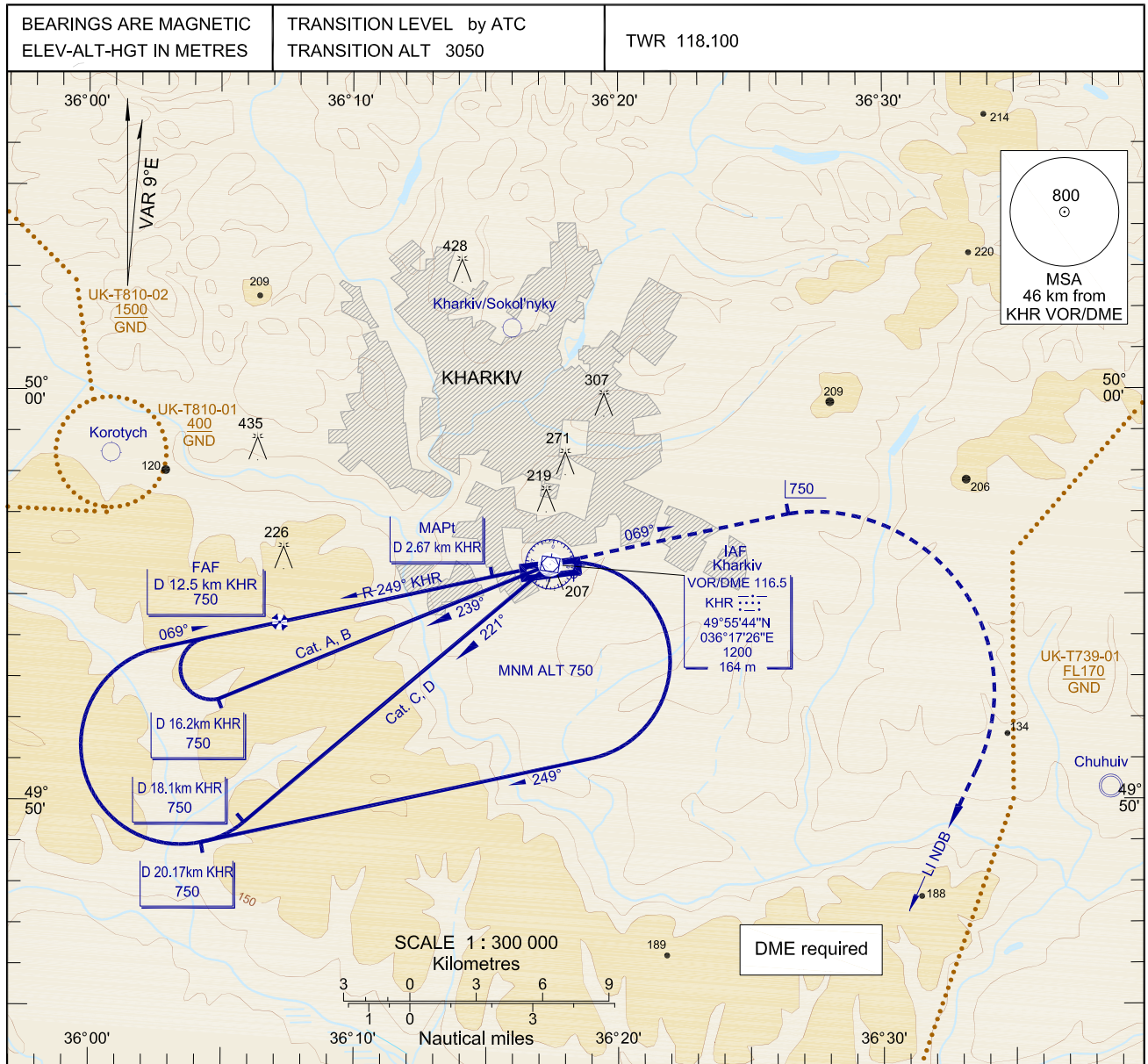


**INSTRUMENT
APPROACH CHART (IAC)-ICAO**

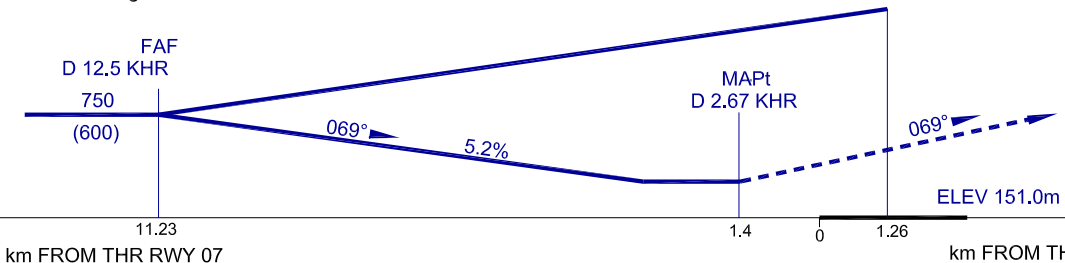
AD ELEV 161 m

**KHARKIV/Osnova
VOR RWY 07**



MISSED APPROACH RADIO COMM FAILURE:
Climb on track 069° to 750(600), then turn RIGHT to LI NDB climbing to 3050, hold over 5 min , then proceed to IAF KHR VOR.
then according to chart.

MISSED APPROACH:
Climb on track 069° to 750(600), then turn RIGHT to LI NDB climbing to 3050, then as directed by ATC



OCA/H		A	B	C	D	NOTE: Visual manoeuvring (circling) and visual approach in NORTH direction from AD not authorized.				
Straight-in Approach	KHR VOR	285(135)	285(135)	285(135)	285(135)					
Circling		310(160)	365(210)	430(280)	430(280)					
GROUND SPEED		km/h	150	180	210	240	270	300	330	360
FAF - MAPt 9832m		min:s	3.56	3.17	2.49	2.27	2.11	1.58	1.47	1.38
RATE OF DESCENT		m/s	2.2	2.6	3.0	3.5	3.9	4.3	4.8	5.2

CHANGE: Name Kharkiv/Sokol'nyky.