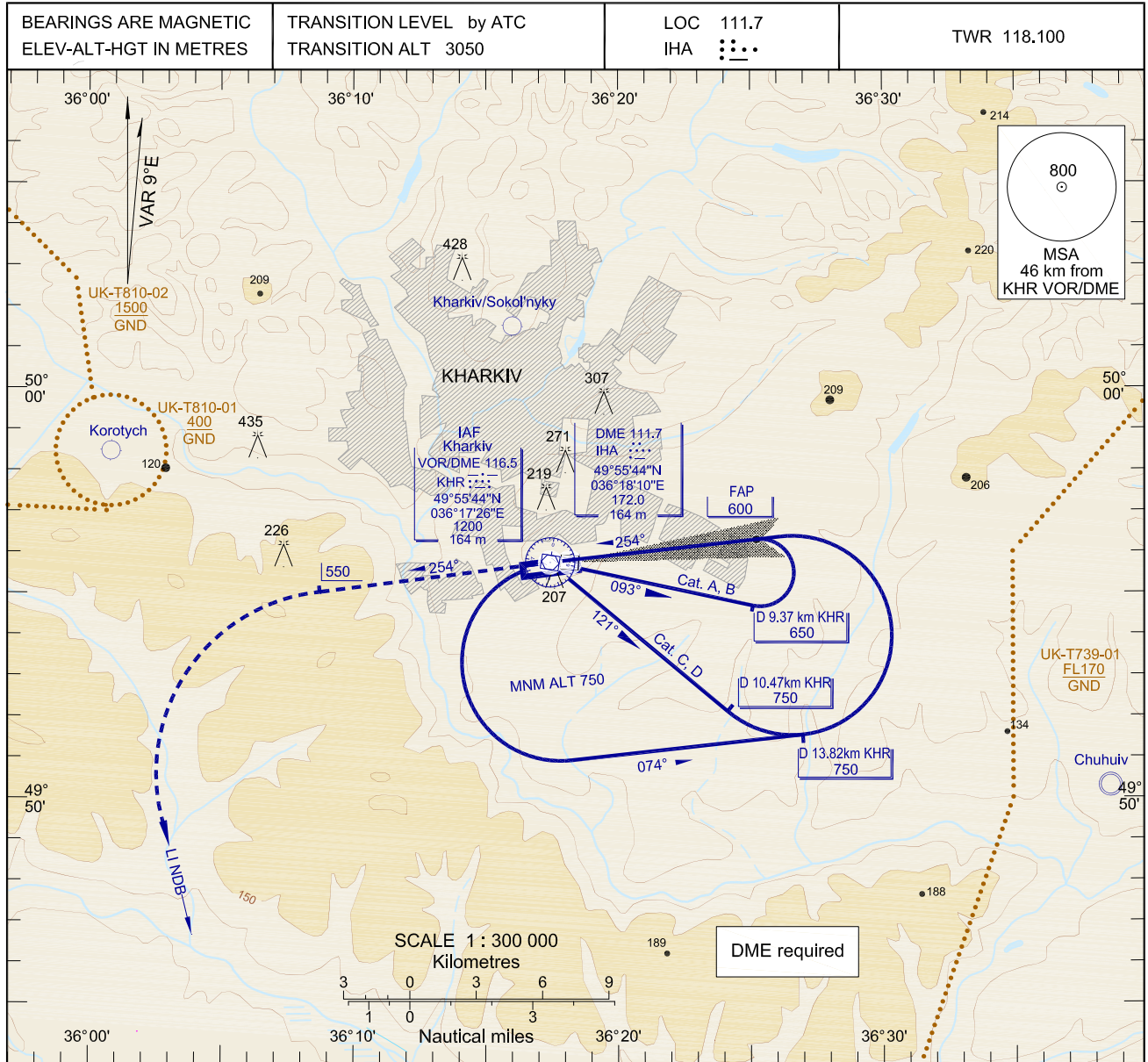


INSTRUMENT APPROACH CHART (IAC)-ICAO

AD ELEV 161 m

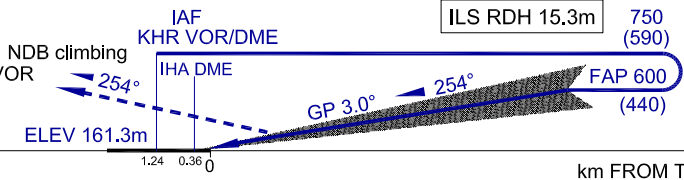
KHARKIV/Osnova ILS DME RWY 25



IHA DME, km	8.0	7.0	6.0	5.0	4.0	3.0	2.0	1.0
DIST THR, km	7.63	6.63	5.63	4.63	3.63	2.64	1.64	0.64
ALT (HGT), m	580(419)	528(365)	476(314)	423(262)	371(210)	319(157)	266(105)	214(53)

MISSED APPROACH:
Climb on track 254° to 550(390), then turn LEFT to LI NDB climbing to 3050, then as directed by ATC

MISSED APPROACH RADIO COMM FAILURE:
Climb on track 254° to 550(390), then turn LEFT to LI NDB climbing to 3050, hold over 5 min, then proceed to IAF KHR VOR then according to chart.



km FROM THR RWY 25 km FROM THR RWY 25

OCA/H		A	B	C	D					
Straight-in Approach	ILS Cat I	223(61)	226(64)	229(67)	232(70)					
	ILS Cat II	196(34)	201(39)	205(43)	209(47)					
Circling		325(160)	365(200)	430(270)	430(270)					
GROUND SPEED		km/h	150	180	210	240	270	300	330	360
FAP - THR 8085m		min:s	3.14	2.42	2.19	2.01	1.48	1.37	1.28	1.21
RATE OF DESCENT		m/s	2.2	2.6	3.1	3.5	3.9	4.4	4.8	5.2

NOTE:
Visual manoeuvring (circling) and visual approach in NORTH direction from AD not authorized.

CHANGE: Name Kharkiv/Sokolnyky.