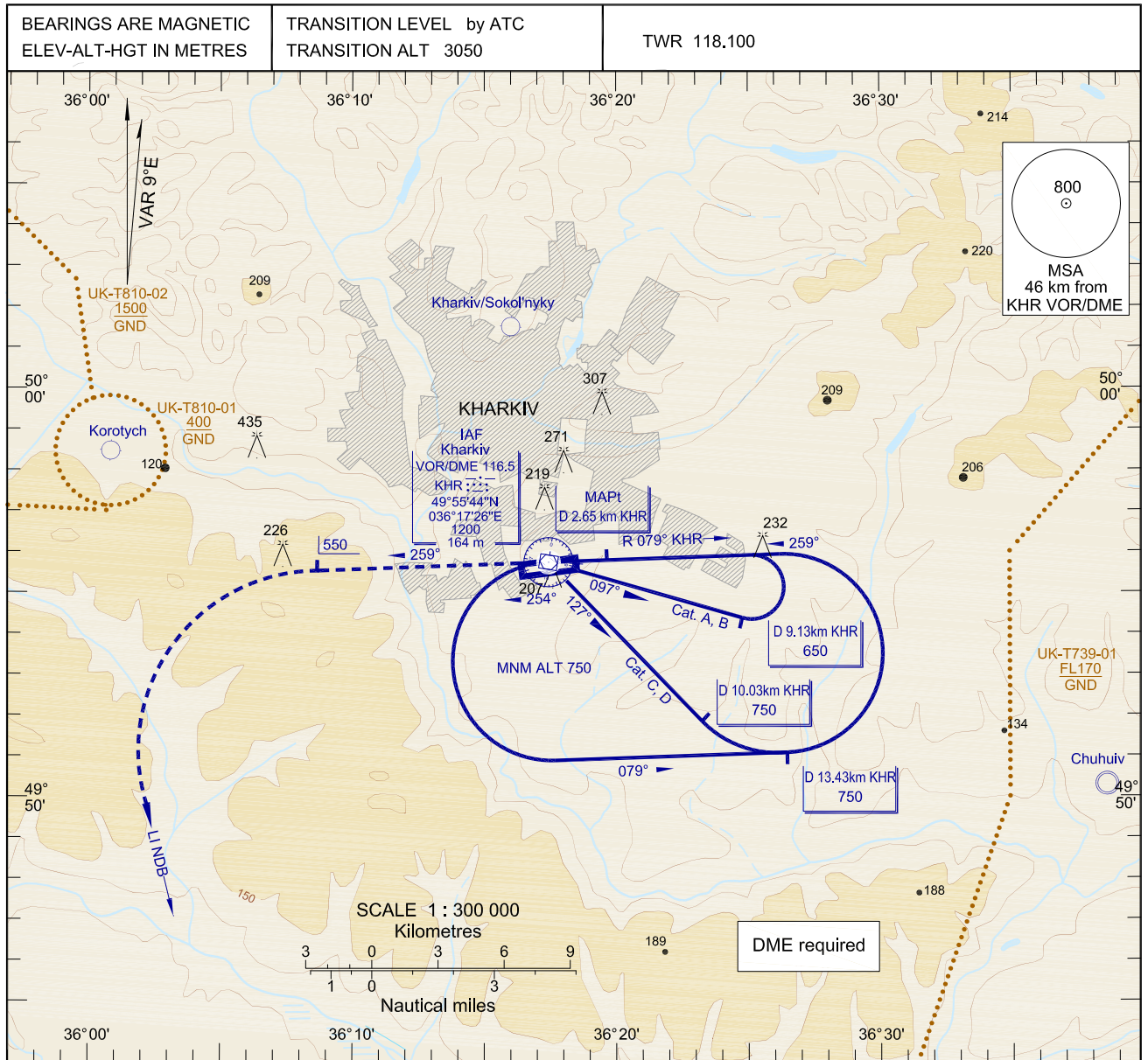


**INSTRUMENT
APPROACH CHART (IAC)-ICAO**

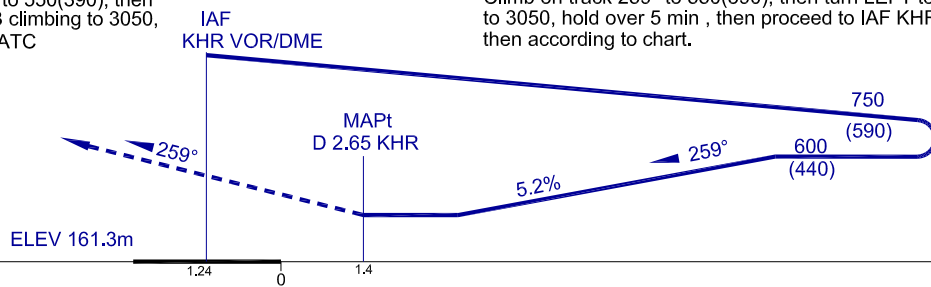
AD ELEV 161 m

**KHARKIV/Osnova
VOR RWY 25**



MISSED APPROACH:
Climb on track 259° to 550(390), then turn LEFT to LI NDB climbing to 3050, then as directed by ATC

MISSED APPROACH RADIO COMM FAILURE:
Climb on track 259° to 550(390), then turn LEFT to LI NDB climbing to 3050, hold over 5 min, then proceed to IAF KHR VOR.



km FROM THR RWY 25

km FROM THR RWY 25

OCA/H		A	B	C	D
Straight-in Approach	KHR VOR	325(160)	325(160)	325(160)	325(160)
Circling		325(160)	365(200)	430(270)	430(270)

NOTE:
Visual manoeuvring (circling) and visual approach in NORTH direction from AD not authorized.

CHANGE: Name Kharkiv/Sokol'nyky.