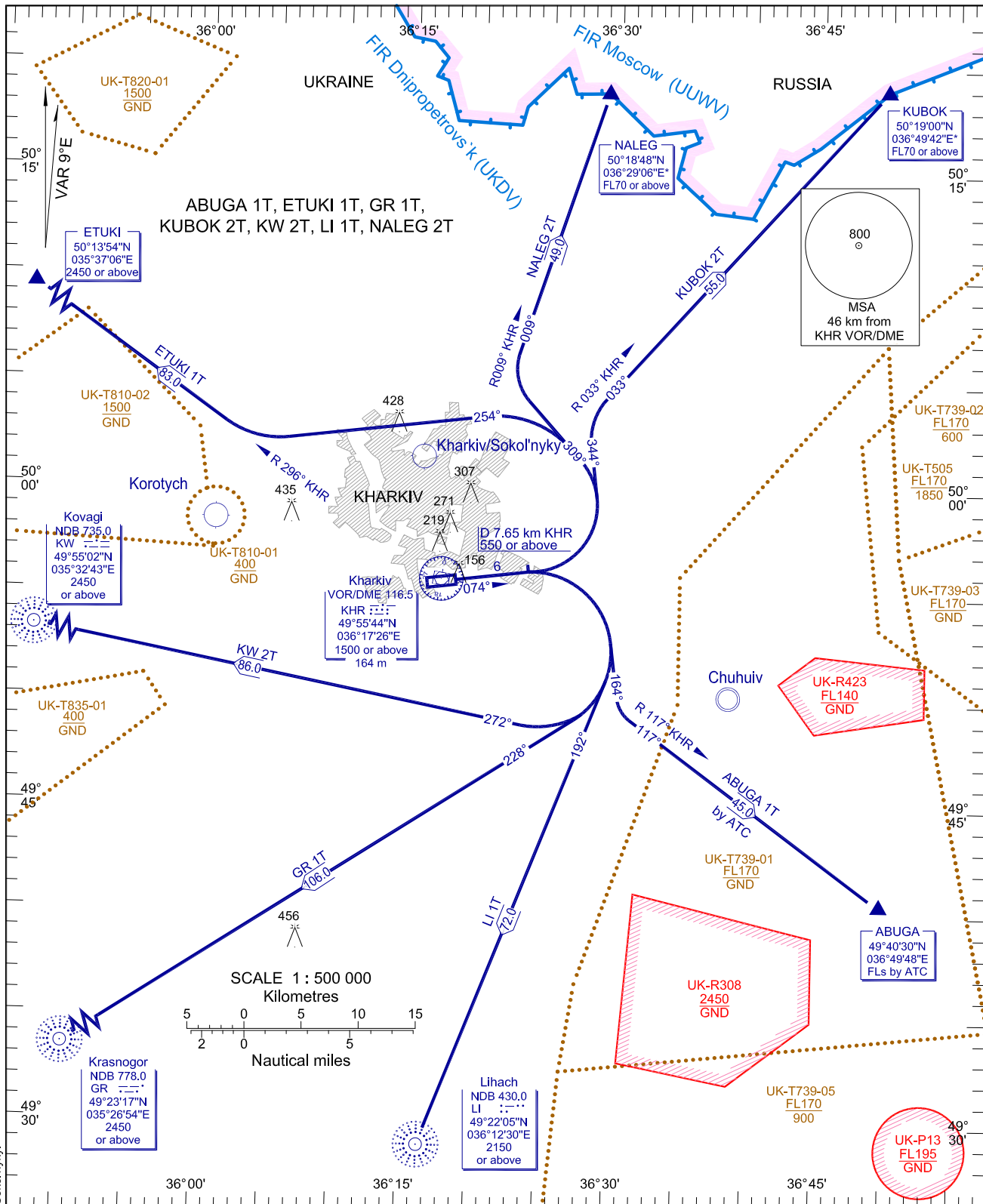


STANDARD DEPARTURE CHART
INSTRUMENT (SID)-ICAO

TRANSITION LEVEL	by ATC	TWR 118.100
TRANSITION ALT	3050	APP 118.800

KHARKIV/Osnova
RWY 07



NOTE:
1. Minimum climb gradient 6% up to 550m. If unable advise ATC.

BEARINGS AND TRACKS ARE MAGNETIC
ALTITUDES, HEIGHTS AND ELEVATIONS ARE IN METRES
DISTANCES ARE IN KILOMETRES

CHANGE: GUBKI 1S; NOTE: name Kharkiv/Sokolnyky.

SID RWY 07

Designator	Route	Altitude	Remarks
NALEG 2T NALEG TWO TANGO	On track 074° climb to reach D7.65 km DME KHR at 550 or above, turn LEFT on track 309° to intercept R009° VOR KHR to NALEG.	Cross NALEG at FL70 or above.	Minimum climb gradient 6% up to 550m. If unable advise ATC.
KUBOK 2T KUBOK TWO TANGO	On track 074° climb to reach D7.65 km DME KHR at 550 or above, turn LEFT on track 344° to intercept R033° VOR KHR to KUBOK.	Cross KUBOK at FL70 or above.	Minimum climb gradient 6% up to 550m. If unable advise ATC.
ABUGA 1T ABUGA ONE TANGO	On track 074° climb to reach D7.65 km DME KHR at 550 or above, turn RIGHT on track 164° to intercept R117° VOR KHR to ABUGA	Cross ABUGA at FLs by ATC	Minimum climb gradient 6% up to 550m. If unable advise ATC
LI 1T LIHACH ONE TANGO	On track 074° climb to reach D7.65 km DME KHR at 550 or above, turn RIGHT on track 192° to LI NDB.	Cross LI NDB at 2150 or above.	Minimum climb gradient 6% up to 550m. If unable advise ATC
GR 1T Krasnogor ONE TANGO	On track 074° climb to reach D7.65 km DME KHR at 550 or above, turn RIGHT on track 228° to GR NDB	Cross GR NDB at 2450 or above	Minimum climb gradient 6% up to 550m. If unable advise ATC
KW 2T Kovagi TWO TANGO	On track 074° climb to reach D7.65 km DME KHR at 550 or above, turn RIGHT on track 272° to KW NDB	Cross KW NDB at 2450 or above.	Minimum climb gradient 6% up to 550m. If unable advise ATC
ETUKI 1T ETUKI ONE TANGO	On track 074° climb to reach D7.65 km DME KHR at 550 or above, turn LEFT on track 254° to intercept R296° VOR KHR to ETUKI.	Cross ETUKI at 2450 or above.	Minimum climb gradient 6% up to 550m. If unable advise ATC.