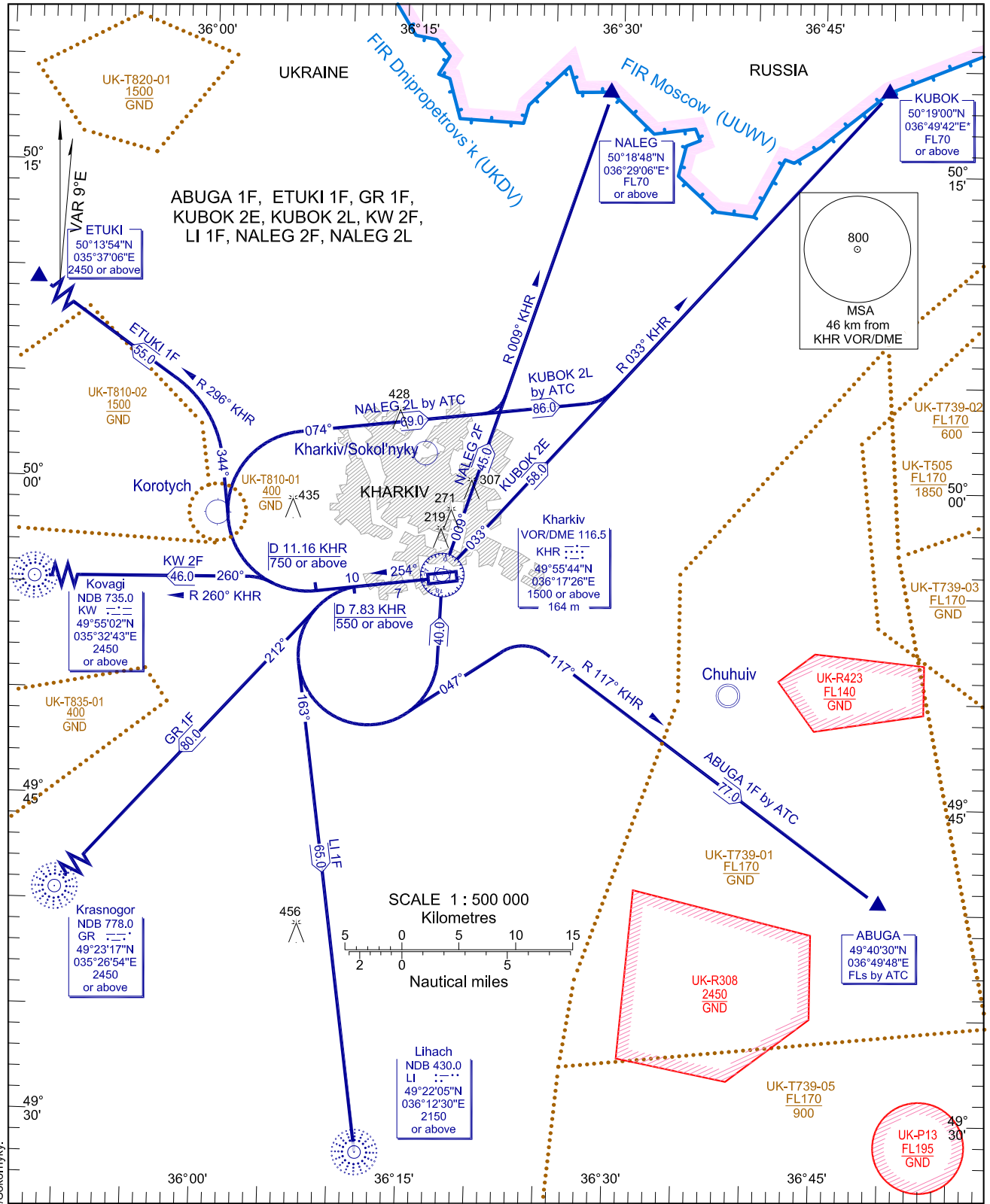


STANDARD DEPARTURE CHART
INSTRUMENT (SID)-ICAO

TRANSITION LEVEL	by ATC	TWR	118.100
TRANSITION ALT	3050	APP	118.800

KHARKIV/Osnova
RWY 25



NOTE:
 1. Minimum climb gradient 6% up to 550m. If unable advise ATC
 2. Minimum climb gradient 6% up to 750m for ETUKI 1F, KW 2F, NALEG 2L and KUBOK 2L. If unable advise ATC

BEARINGS AND TRACKS ARE MAGNETIC
 ALTITUDES, HEIGHTS AND ELEVATIONS ARE IN METRES
 DISTANCES ARE IN KILOMETRES

CHANGE: GUBKI 1F; NOTE: name Kharkiv/Sokolnyky.

SID RWY 25

Designator <i>Обозначение</i>	Route <i>Маршрут</i>	Altitude <i>Эшелон</i>	Remarks <i>Примечания</i>
NALEG 2F NALEG TWO FOXTROT	On track 254° climb to reach D7.83 km DME KHR at 550 or above, turn LEFT to VOR KHR, turn to R009° VOR KHR to NALEG	Cross VOR KHR at 1500 or above, cross NALEG at FL70 or above	Minimum climb gradient 6% up to 550m. If unable advise ATC
KUBOK 2E KUBOK TWO ECHO	On track 254° climb to reach D7.83 km DME KHR at 550 or above, turn LEFT to VOR KHR, turn to R033° VOR KHR to KUBOK	Cross VOR KHR at 1500 or above, cross KUBOK at FL70 or above	Minimum climb gradient 6% up to 550m. If unable advise ATC
ABUGA 1F ABUGA ONE FOXTROT	On track 254° climb to reach D7.83 km DME KHR at 550 or above, turn LEFT on track 047° to intercept R117° VOR KHR to ABUGA	Cross ABUGA at FLs by ATC	Minimum climb gradient 6% up to 550m. If unable advise ATC. By ATC.
LI 1F Lihach ONE FOXTROT	On track 254° climb to reach D7.83 km DME KHR at 550 or above, turn LEFT on track 163° to LI NDB	Cross LI NDB at 2150 or above	Minimum climb gradient 6% up to 550m. If unable advise ATC
GR 1F Krasnogor ONE FOXTROT	On track 254° climb to reach D7.83 km DME KHR at 550 or above, turn LEFT on track 212° to GR NDB	Cross GR NDB at 2450 or above	Minimum climb gradient 6% up to 550m. If unable advise ATC
KW 2F Kovagi TWO FOXTROT	On track 254° climb to reach D11.16 km DME KHR at 750 or above, turn RIGHT to intercept R260° VOR KHR to KW NDB	Cross KW NDB at 2450 or above	Minimum climb gradient 6% up to 750m. If unable advise ATC
NALEG 2L NALEG TWO LIMA	On track 254° climb to reach D11.16 km DME KHR at 750 or above, turn RIGHT on track 074° to intercept R009° VOR KHR to NALEG	Cross NALEG at FL70 or above	Minimum climb gradient 6% up to 750m. If unable advise ATC. By ATC.
KUBOK 2L KUBOK TWO LIMA	On track 254° climb to reach D11.16 km DME KHR at 750 or above, turn RIGHT on track 074° to intercept R033° VOR KHR to KUBOK	Cross KUBOK at FL70 or above	Minimum climb gradient 6% up to 750m. If unable advise ATC. By ATC.
ETUKI 1F ETUKI ONE FOXTROT	On track 254° climb to reach D11.16 km DME KHR at 750 or above, turn RIGHT on track 344° to intercept R296° VOR KHR to ETUKI	Cross ETUKI at 2450 or above.	Minimum climb gradient 6% up to 750m. If unable advise ATC.