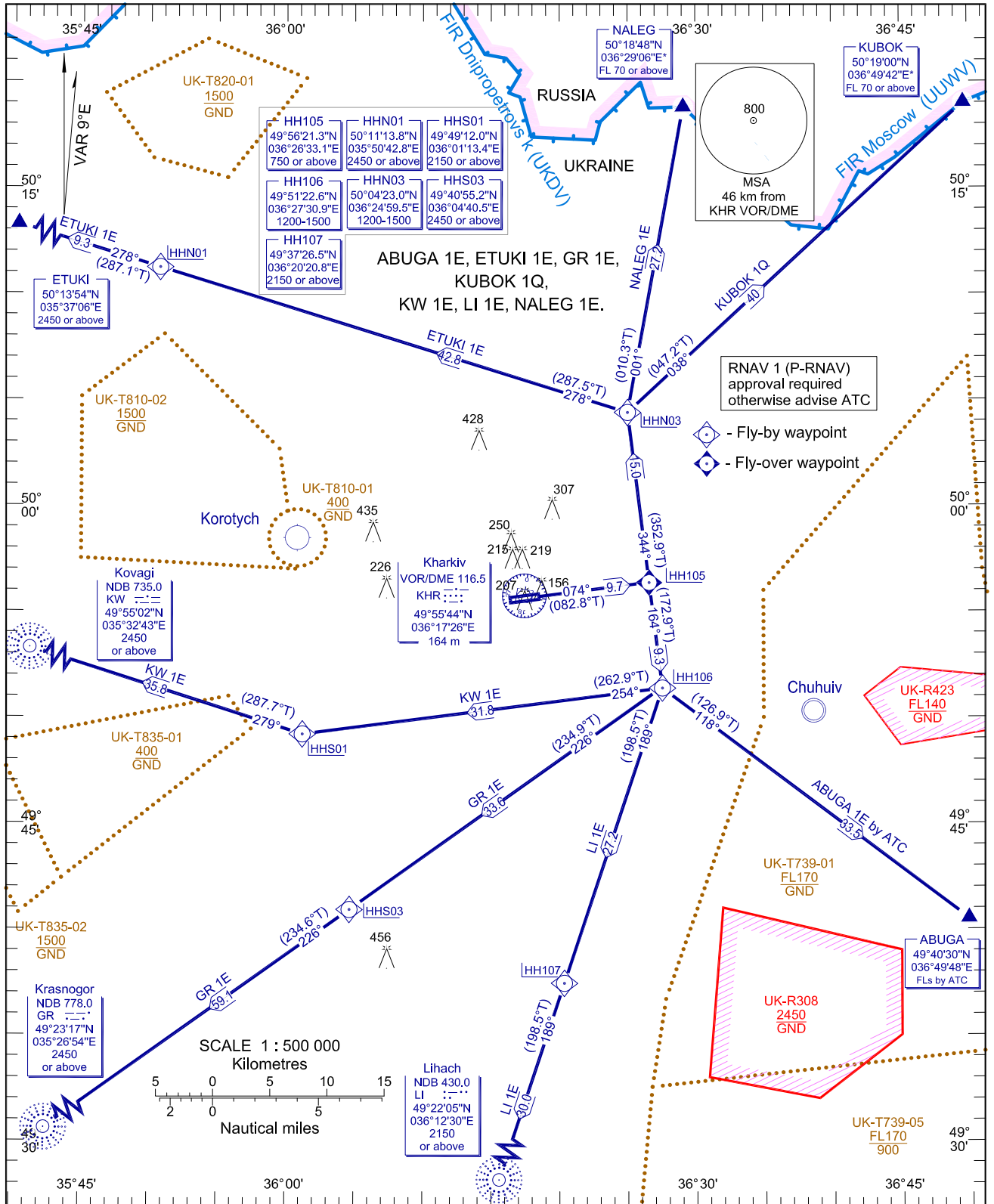


TRANSITION LEVEL	by ATC	APP	118.800
TRANSITION ALT	3050	TWR	118.100

KHARKIV/Osnova
RNAV (GNSS) RWY 07

RNAV DEPARTURE PROCEDURE



NOTE:
1. Minimum climb gradient 6.0% up to 750m. It unable advice ATC.

CHANGE: GUBKI 1E: NOTE:

BEARINGS AND TRACKS ARE MAGNETIC
ALTITUDES, HEIGHTS AND ELEVATIONS ARE IN METRES
DISTANCES ARE IN KILOMETRES

RNAV DEPARTURE PROCEDURE				RNAV 1 (GNSS) RWY 07			
Name	Path description	Fix identifier (Waypoint name)	Flyover	Course *M (*T)	Turn direction	Altitude	Speed limit
ETUKI 1E ETUKI ONE ECHO	CF	HH105	Y	074 (082,8)	-	+ 750	-
	TF	HHN03	N	344 (352,9)	L	1200-1500	-
	TF	HHN01	N	278 (287,5)	L	+ 2450	-
	TF	ETUKI	N	278 (287,1)	L	+ 2450	-
NALEG 1E NALEG ONE ECHO	CF	HH105	Y	074 (082,8)	-	+ 750	-
	TF	HHN03	N	344 (352,9)	L	1200-1500	-
	TF	NALEG	N	001 (010,3)	R	+ FL70	-
KUBOK 1Q KUBOK ONE QUEBEC	CF	HH105	Y	074 (082,8)	-	+ 750	-
	TF	HHN03	N	344 (352,9)	L	1200-1500	-
	TF	KUBOK	N	038 (047,2)	R	+ FL70	-
ABUGA 1E by ATC ABUGA ONE ECHO	CF	HH105	Y	074 (082,8)	-	+ 750	-
	TF	HH106	N	164 (172,9)	R	1200-1500	-
	TF	ABUGA	N	118 (126,9)	L	By ATC	-
LI 1E Lihach ONE ECHO	CF	HH105	Y	074 (082,8)	-	+ 750	-
	TF	HH106	N	164 (172,9)	R	1200-1500	-
	TF	HH107	N	189 (198,5)	R	+ 2150	-
	TF	LI	N	189 (198,5)	-	+ 2150	-
GR 1E Krasnogor ONE ECHO	CF	HH105	Y	074 (082,8)	-	+ 750	-
	TF	HH106	N	164 (172,9)	R	1200-1500	-
	TF	HHS03	N	226 (234,9)	R	+ 2450	-
	TF	GR	N	226 (234,6)	L	+ 2450	-
KW 1E Kovagi ONE ECHO	CF	HH105	Y	074 (082,8)	-	+ 750	-
	TF	HH106	N	164 (172,9)	R	1200-1500	-
	TF	HHS01	N	254 (262,9)	R	+ 2150	-
	TF	KW	N	279 (287,7)	R	+ 2450	-

WAYPOINTS								
Waypoint name	Coordinates		Waypoint name	Coordinates		Waypoint name	Coordinates	
ABUGA	49°40'30,0"N	036°49'48,0"E	HH107	49°37'26,5"N	036°20'20,8"E	KUBOK	50°19'00,0"N	036°49'42,0"E
ETUKI	50°13'54,0"N	035°37'06,0"E	HHN01	50°11'13,8"N	035°50'42,8"E	KW	49°55'02,0"N	035°32'43,0"E
GR	49°23'17,0"N	035°26'54,0"E	HHN03	50°04'23,0"N	036°24'59,5"E	LI	49°22'05,0"N	036°12'30,0"E
HH105	49°56'21,3"N	036°26'33,1"E	HHS01	49°49'12,0"N	036°01'13,4"E	NALEG	50°18'48,0"N	036°29'06,0"E
HH106	49°51'22,6"N	036°27'30,9"E	HHS03	49°40'55,2"N	036°04'40,5"E			

INTENTIONALLY LEFT BLANK
СТРАНИЦА НАМЕРЕННО ОСТАВЛЕНА НЕЗАПОЛНЕННОЙ