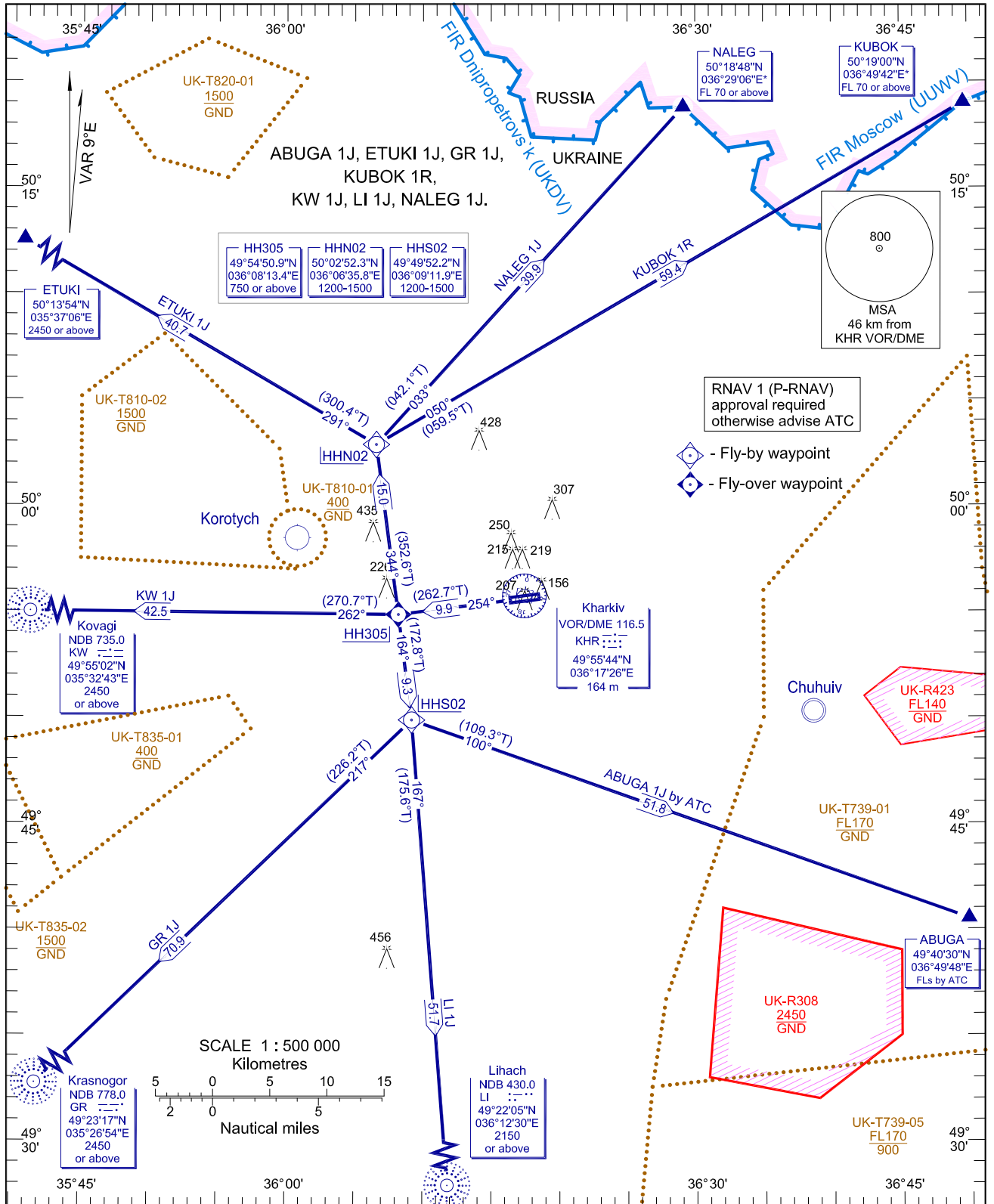


TRANSITION LEVEL	by ATC	APP	118.800
TRANSITION ALT	3050	TWR	118.100

**KHARKIV/Osnova**  
RNAV (GNSS) RWY 25

**RNAV DEPARTURE PROCEDURE**



NOTE:  
1. Minimum climb gradient 6.0% up to 750m. It unable advice ATC.

CHANGE: GUBKI 1J; NOTE:

BEARINGS AND TRACKS ARE MAGNETIC  
ALTITUDES, HEIGHTS AND ELEVATIONS ARE IN METRES  
DISTANCES ARE IN KILOMETRES

RNAV DEPARTURE PROCEDURE				RNAV 1 (GNSS) RWY 25			
Name	Path description	Fix identifier (Waypoint name)	Flyover	Course *M (*T)	Turn direction	Altitude	Speed limit
ETUKI 1J	CF	HH305	Y	254 (262,7)	-	+ 750	-
ETUKI ONE	TF	HHN02	N	344 (352,6)	R	1200-1500	-
JULIET	TF	ETUKI	N	291 (300,4)	L	+ 2450	-
NALEG 1J	CF	HH305	Y	254 (262,7)	-	+ 750	-
NALEG ONE	TF	HHN02	N	344 (352,6)	R	1200-1500	-
JULIET	TF	NALEG	N	033 (042,1)	R	+ FL70	-
KUBOK 1R	CF	HH305	Y	254 (262,7)	-	+ 750	-
KUBOK ONE	TF	HHN02	N	344 (352,6)	R	1200-1500	-
ROMEO	TF	KUBOK	N	050 (059,5)	R	+ FL70	-
ABUGA 1J by	CF	HH305	Y	254 (262,7)	-	+ 750	-
ATC ABUGA	TF	HHS02	N	164 (172,8)	L	1200-1500	-
ONE JULIET	TF	ABUGA	N	100 (109,3)	L	By ATC	-
LI 1J	CF	HH305	Y	254 (262,7)	-	+ 750	-
Lihach ONE	TF	HHS02	N	164 (172,8)	L	1200-1500	-
JULIET	TF	LI	N	167 (175,6)	R	+ 2150	-
GR 1J	CF	HH305	Y	254 (262,7)	-	+ 750	-
Krasnogor	TF	HHS02	N	164 (172,8)	L	1200-1500	-
ONE JULIET	TF	GR	N	217 (226,2)	R	+ 2450	-
KW 1J	CF	HH305	Y	254 (262,7)	-	+ 750	-
Kovagi ONE	TF	KW	N	262 (270,7)	R	+ 2450	-

## WAYPOINTS

Waypoint name	Coordinates		Waypoint name	Coordinates		Waypoint name	Coordinates	
ABUGA	49°40'30,0"N	036°49'48,0"E	HHN02	50°02'52,3"N	036°06'35,8"E	LI	49°22'05,0"N	036°12'30,0"E
ETUKI	50°13'54,0"N	035°37'06,0"E	HHS02	49°49'52,2"N	036°09'11,9"E	NALEG	50°18'48,0"N	036°29'06,0"E
GR	49°23'17,0"N	035°26'54,0"E	KUBOK	50°19'00,0"N	036°49'42,0"E			
HH305	49°54'50,9"N	036°08'13,4"E	KW	49°55'02,0"N	035°32'43,0"E			

INTENTIONALLY LEFT BLANK  
*СТРАНИЦА НАМЕРЕННО ОСТАВЛЕНА НЕЗАПОЛНЕННОЙ*