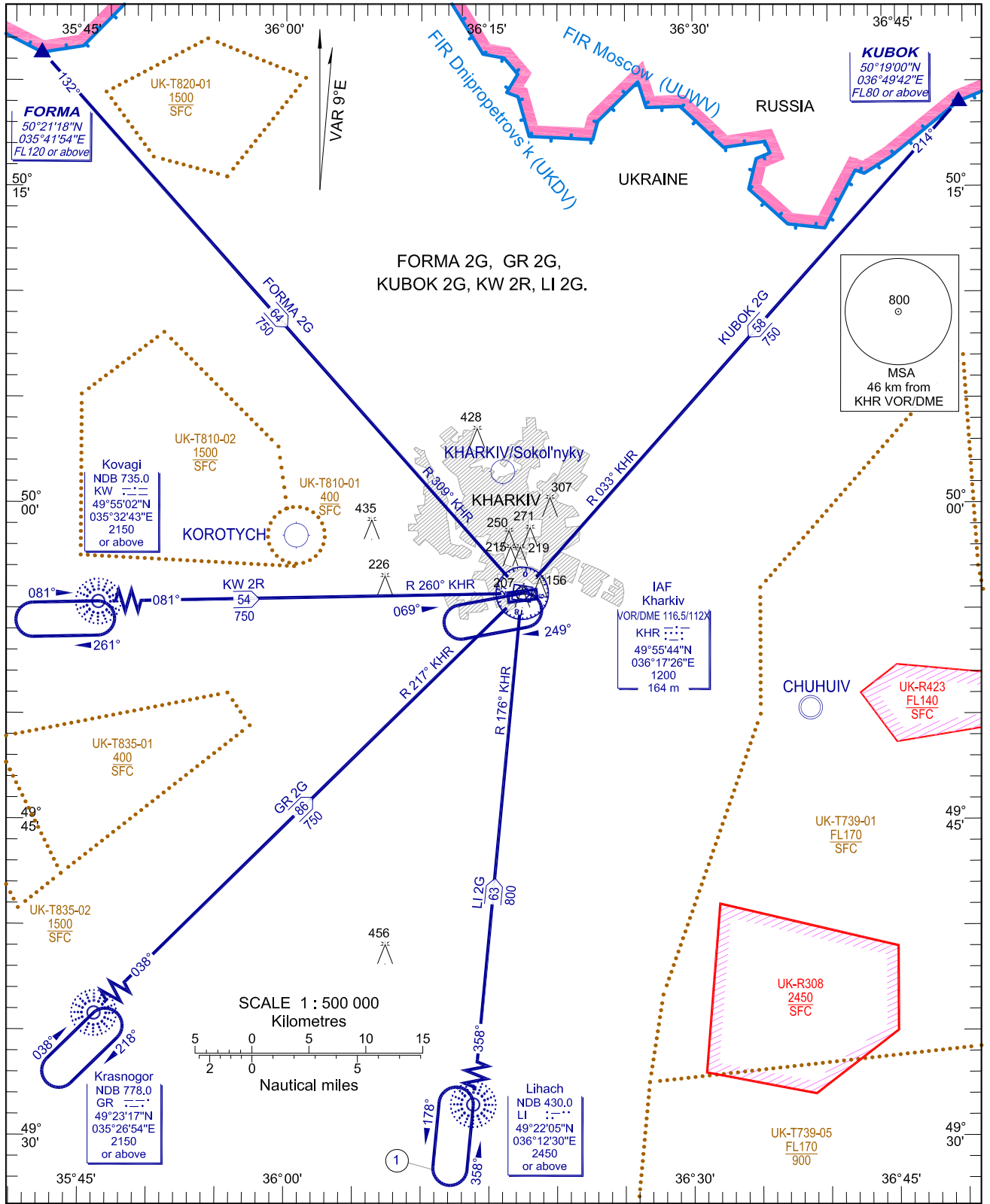


STANDARD ARRIVAL CHART
INSTRUMENT (STAR)-ICAO

TRANSITION LEVEL: by ATC
TRANSITION ALT: 3050

APP 118.800
TWR 118.100
Meteo 127.600

KHARKIV/Osnova
RWY 07



CHANGE: APP FREQ.

STAR RWY 07

Designator <i>Обозначение</i>	Route <i>Маршрут</i>	Altitude <i>Эшелон</i>	Remarks <i>Примечания</i>
KUBOK 2G KUBOK TWO GOLF	On track 214° to IAF KHR VOR/DME, then according to approach chart.	Cross KUBOK at FL80 or above, KHR VOR/DME at 1200.	nil
LI 2G Lihach TWO GOLF	On track 358° to IAF KHR VOR/DME, then according to approach chart.	Cross LI NDB at 2450 or above, KHR VOR/DME at 1200.	nil
GR 2G Krasnogor TWO GOLF	On track 038° to IAF KHR VOR/DME, then according to approach chart.	Cross GR NDB at 2150 or above, KHR VOR/DME at 1200.	nil
KW 2R Kovagi TWO ROMEO	On track 081° to IAF KHR VOR/DME, then according to approach chart.	Cross KW NDB at 2150 or above, KHR VOR/DME at 1200.	nil
FORMA 2G FORMA TWO GOLF	On track 132° to IAF KHR VOR/DME, then according to approach chart.	Cross FORMA at FL120 or above, KHR VOR/DME at 1200.	nil