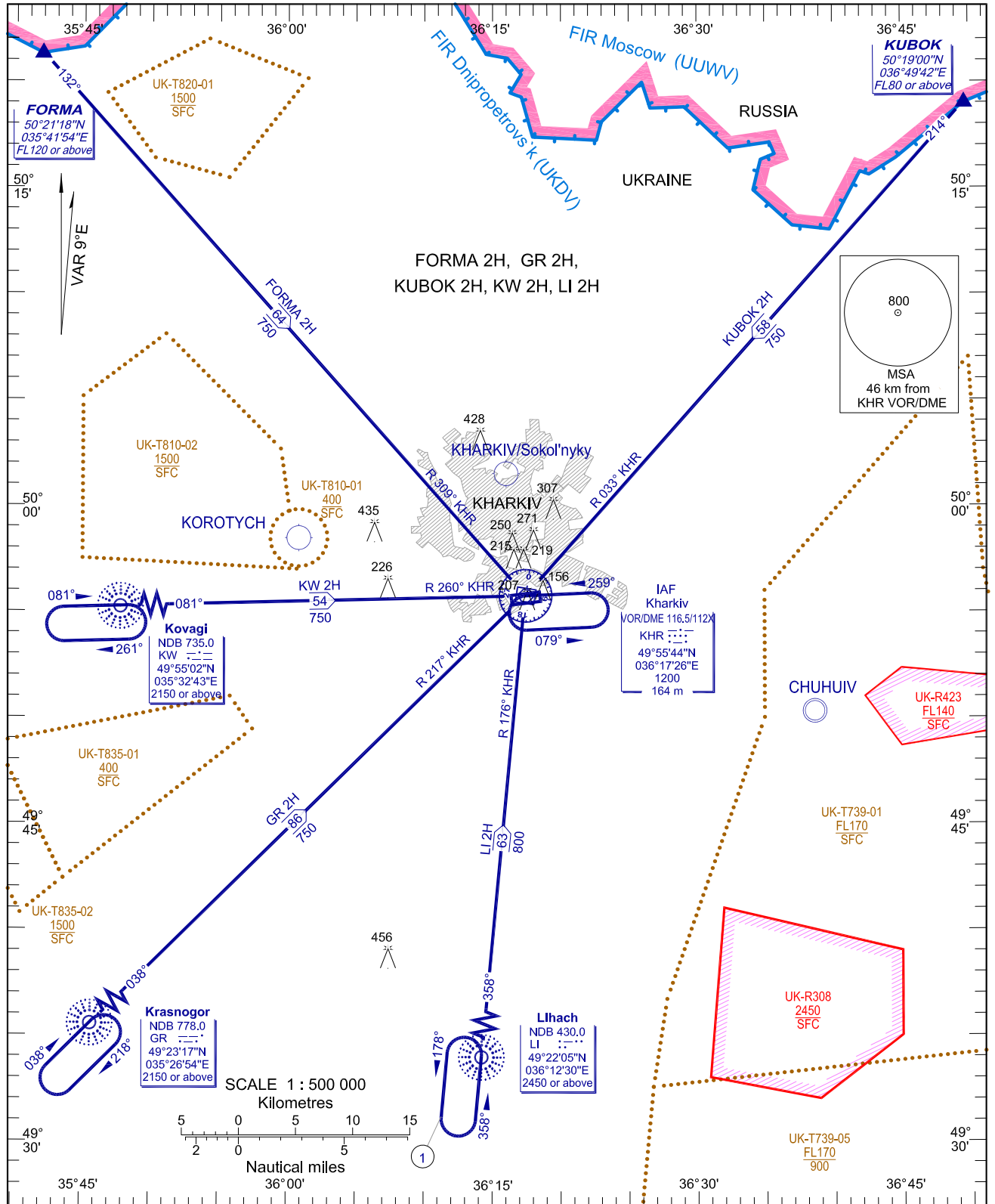


STANDARD ARRIVAL CHART
INSTRUMENT (STAR)-ICAO

TRANSITION LEVEL : by ATC
TRANSITION ALT: 3050

APP 118.800
TWR 118.100
Meteo 127.600

KHARKIV/Osnova
RWY 25



NOTE:

- 1. Available for missed approach only at 3050 AMSL.

CHANGE: APP FREQ.

BEARINGS AND TRACKS ARE MAGNETIC
ALTITUDES, HEIGHTS AND ELEVATIONS ARE IN METRES
DISTANCES ARE IN KILOMETRES

STAR RWY 25

Designator <i>Обозначение</i>	Route <i>Маршрут</i>	Altitude <i>Эшелон</i>	Remarks <i>Примечания</i>
KUBOK 2H KUBOK TWO HOTEL	On track 214° to IAF KHR VOR/DME, then according to approach chart.	Cross KUBOK at FL80 or above, KHR VOR/DME at 1200.	nil
LI 2H Lihach TWO HOTEL	On track 358° to IAF KHR VOR/DME, then according to approach chart.	Cross LI NDB at 2450 or above, KHR VOR/DME at 1200.	nil
GR 2H Krasnogor TWO HOTEL	On track 038° to IAF KHR VOR/DME, then according to approach chart.	Cross GR NDB at 2150 or above, KHR VOR/DME at 1200.	nil
KW 2H Kovagi TWO HOTEL	On track 081° to IAF KHR VOR/DME, then according to approach chart.	Cross KW NDB at 2150 or above, KHR VOR/DME at 1200.	nil
FORMA 2H FORMA TWO HOTEL	On track 132° to IAF KHR VOR/DME, then according to approach chart.	Cross FORMA at FL120 or above, KHR VOR/DME at 1200.	nil