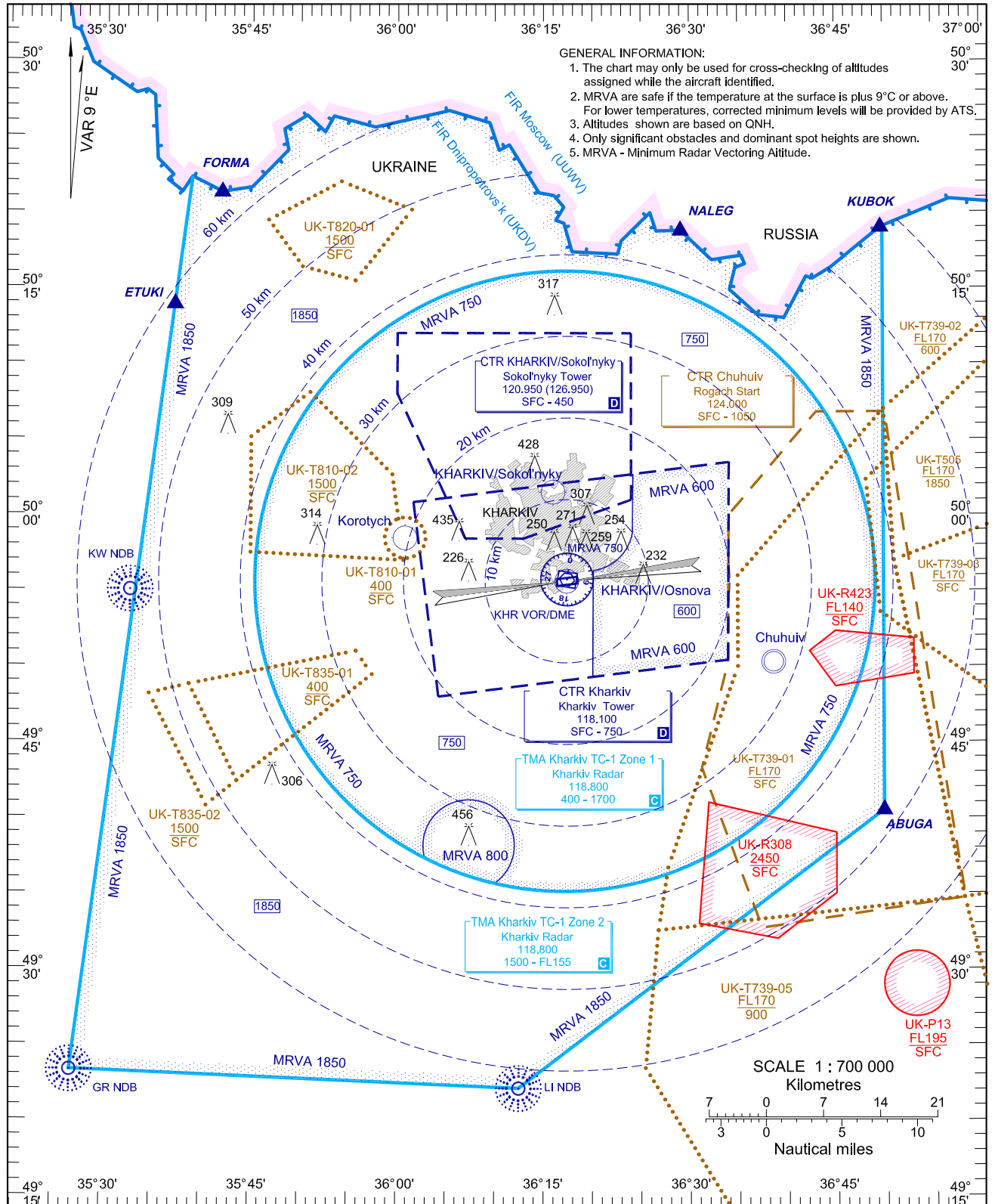


ATC SURVEILLANCE MINIMUM
ALTITUDE CHART-ICAO

AD ELEV 161m

TRANSITION LEVEL: by ATC
TRANSITION ALT: 3050

KHARKIV/Osnova



- GENERAL INFORMATION:
1. The chart may only be used for cross-checking of altitudes assigned while the aircraft identified.
 2. MRVA are safe if the temperature at the surface is plus 9°C or above. For lower temperatures, corrected minimum levels will be provided by ATS.
 3. Altitudes shown are based on QNH.
 4. Only significant obstacles and dominant spot heights are shown.
 5. MRVA - Minimum Radar Vectoring Altitude.

NOTE:

NDB	GR	778.0kHz
NDB	KW	735.0kHz
NDB	LI	430.0kHz
VOR/DME	KHR	116.5mHz/112X 163.7m

BEARINGS AND TRACKS ARE MAGNETIC
ALTITUDES AND ELEVATIONS ARE IN METRES
DISTANCES ARE IN KILOMETRES

CHANGE: TMA Kharkiv.

Minimum radar vectoring altitude	Coordinates	
1850	502218N	0353848E
	Then along state boundary until the point:	
	501900N	0364942E
	494030N	0364948E
	492205N	0361230E
	492317N	0352654E
	502218N	0353848E

800	493719N	0360257E
	Then along clockwise arc radius 5,6 km centered at the point 493809N 0360725E, to the point:	
	493539N	0361003E
	Then along clockwise arc radius 38 km centered at the point 495537N 0361713E, to the point:	
	493719N	0360257E

750	493719N	0360257E
	Then along clockwise arc radius 38 km centered at the point 495537N 0361713E, to the point:	
	493539N	0361003E
	Then along counter-clockwise arc radius 5,6 km centered at the point 493809N 0360725E, to the point:	
	493719N	0360257E

600	495025N	0363354E
	494915N	0361924E
	495619N	0361926E
	Then along counter-clockwise arc radius 5,6 km centered at the point 495920N 0361928E, to the point:	
	495920N	0362409E
	500242N	0362410E
	500329N	0363402E
	495025N	0363354E